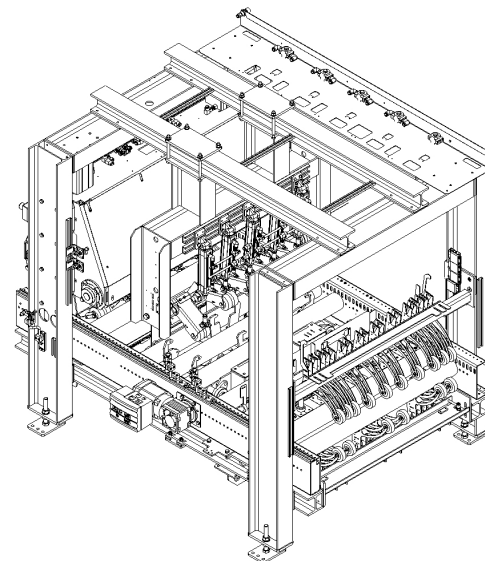
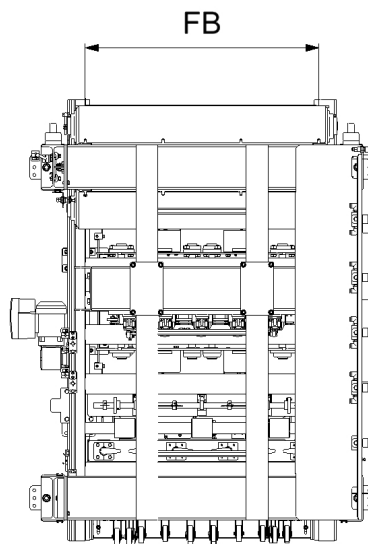
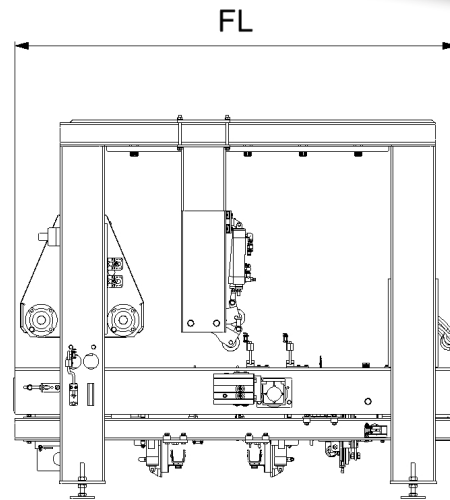
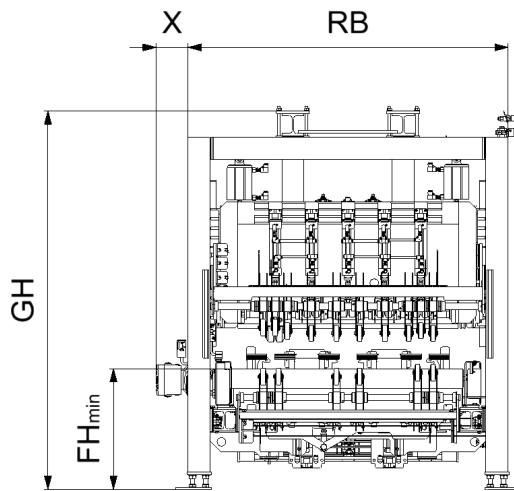


**Pallet check system CompactLine – the best choice for system modernization with low space requirement**

- The pallet check system CompactLine checks empty pallets to defined criteria. After the checks the pallets can be sorted in different categories.
- Conveyor length compressed to 2,000 mm - space-saving design.
- Suitable for all standard pallet models such as euro, industrial and half pallets. Other pallet types are possible on request.
- All checks are carried out without the use of hydraulics.
- With an optimum arrangement of the conveyor lines, a throughput of 200 pall./h (Euro) can be realized.
- Optimal for retrofit/modernization.
- Standardized check modules guarantee optimal functionality.
- The modular design enables a customized composition of the required checks.
- Easiest operation due to the user-friendly menu navigation on the operating terminal.
- The standard PLC contains various statistical evaluations.
- The massive frame construction made of rolled steel profiles underlines the high quality and robust processing of the machine.
- Surface powder-coated in your RAL color.

**Check modules**

- Nail Roller
- Pressure test of deck and running boards
- Tensile test of block nailing
- Free space control
- Block control / completeness of the blocks
- Board width test
- Optical inspection of the pallet color
- Checking the board humidity
- Optical control of the block row (via light barriers)
- Optical inspection of the pallet dimensions (via light barriers)



**List of abbreviations**

<b>FGT</b>	= Type of conveyed material	<b>FB</b>	= Conveyor width	<b>GH</b>	= Overall height	<b>x</b>	= Grid tray = 250
<b>FGB</b>	= Width of conveyed material	<b>RB</b>	= Frame width outside	<b>FGG</b>	= Conveyed material weight		
<b>FGL</b>	= Length of conveyed material	<b>FL</b>	= Conveyor length	<b>v</b>	= Speed		
<b>FGH</b>	= Height of conveyed material	<b>FHmin</b>	= min. conveyor height	<b>P</b>	= Power		

**Standard dimensions in mm (Special versions are possible on request)**

Conveyed material				Conveyor data					Weight conveyed material in kg	Drive roller conveyor	
FGT	FGB	FGL	FGH	FB	RB	FL	FHmin	GH	FGG	P in kW	v in m/s
Euro	800	1200	144	1060	1450	2000	550	FHmin + 1200	max. 100	0,37	0,2 - 0,3
Indu	1000	1200	144	1260	1650	2000	550	FHmin + 1200	max. 100	0,37	0,2 - 0,3